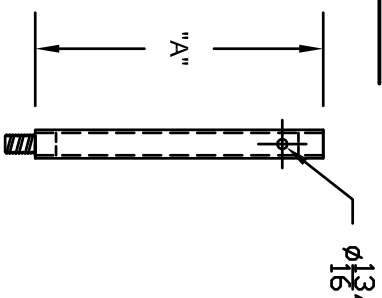
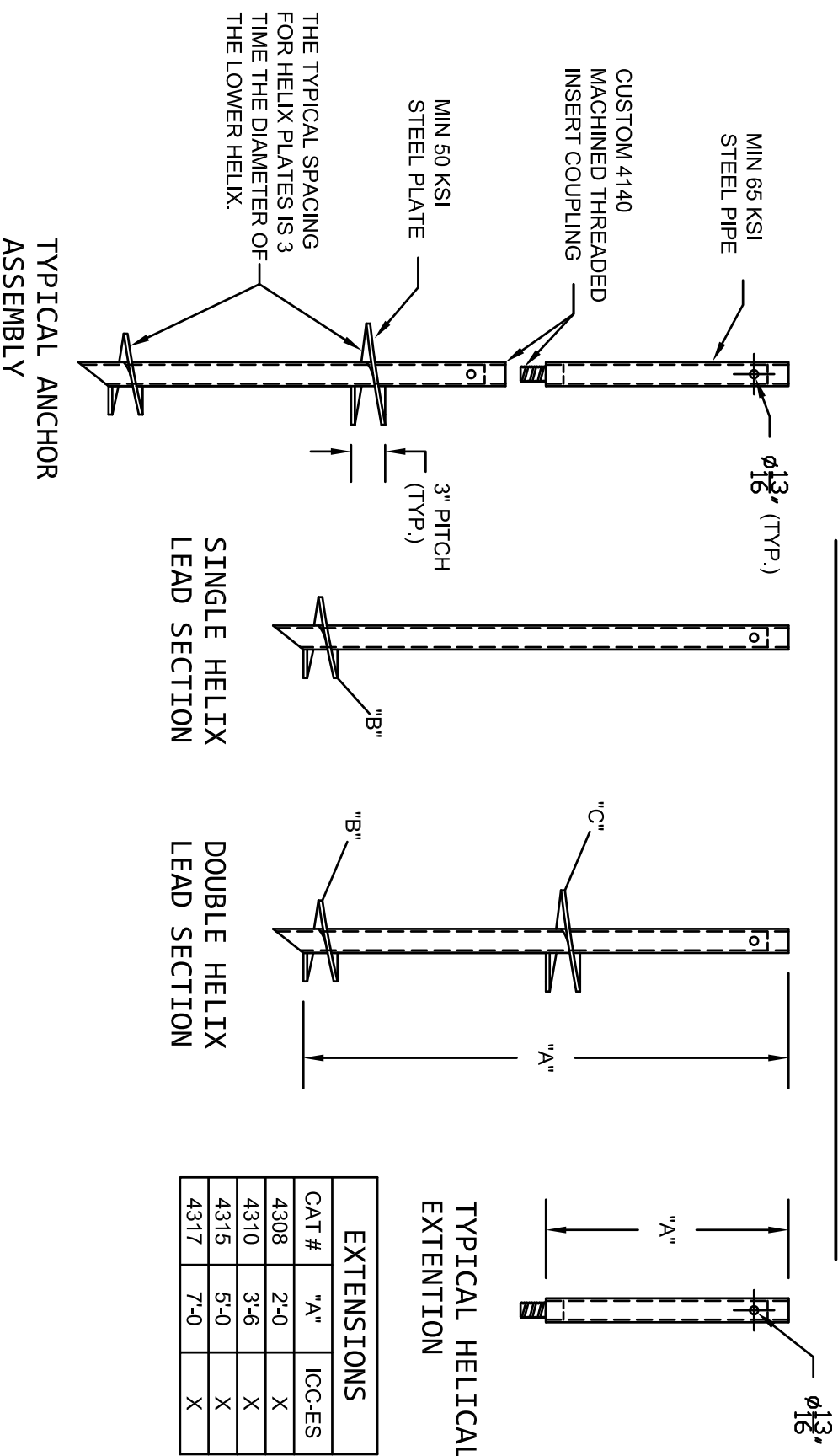


2 3/8"Ø HELICAL PILES AND ANCHORS



TYPICAL HELICAL EXTENTION

EXTENSIONS	
CAT #	"A"
4308	2'-0"
4310	3'-6"
4315	5'-0"
4317	7'-0"

- POLYETHYLENE COPOLYMER THERMOPLASTIC COATING PER ICC-ES AC 228.
- REFERENCE EXTENSION AND LEAD SECTION TABLES FOR TYPICAL LENGTHS AND HELIX COMBINATIONS.
- SHAFT MATERIAL IS 2 3/8" DIAMETER, 0.190" WALL THICKNESS AND MINIMUM 65 KSI PIPE.
- HELIX MATERIAL IS MINIMUM 50 KSI CARBON STEEL. PLATE THICKNESS AVAILABLE IN 0.375" AND 0.5".
- CONNECTORS ARE 4140 CUSTOM MACHINED THREADED INSERTS COUPLERS. BOTH MALE AND FEMALE INSERTS ARE SHOP WELDED IN PLACE.
- NOMINAL SPACING BETWEEN HELICAL PLATES IS THREE TIMES THE DIAMETER OF THE LOWER HELIX.
- MANUFACTURER TO HAVE IN EFFECT INDUSTRY RECOGNIZED WRITTEN QUALITY CONTROL FOR ALL MATERIALS AND MANUFACTURING PROCESSES.
- ALL WELDING IS TO BE DONE BY WELDERS CERTIFIED UNDER SECTION 5 OF THE AWS CODE D1.1.
- SEE ICC-ES EVALUATION REPORT PFC-5996 AND RAM JACK ENGINEERING HANDBOOK FOR ALLOWABLE VALUES AND/OR CONDITIONS OF USE CONCERNING MATERIAL PRESENTED IN THIS DOCUMENT.

STRENGTH RATING

MAX. TORQUE STRENGTH - 3,000 FT-LB
 ULTIMATE CAPACITY (TENS/COMP) - 30 KIP*
 ALLOWABLE CAPACITY (TENS/COMP) - 15 KIP**

* BASED ON A TORQUE FACTOR (Kt) = 10
 ** W/ SAFETY FACTOR OF 2 BEING APPLIED
 CAPACITIES ASSUME PILES ARE FULLY BRACED WITH NO ECCENTRICITY

LEAD SECTION TABLE

CAT #	"A"	"B"	"C"	ICC-ES
4322	5'-0"	8"	10"	X
4324	7'-0"	8"	10"	X
4330	5'-0"	10"	12"	X
4332	7'-0"	10"	12"	X
4348	2'-0"	8"		X
4340	5'-0"	8"		X
4341	7'-0"	8"		X
4350	2'-0"	10"		X
4351	3'-6"	10"		X
4342	5'-0"	10"		X
4343	7'-0"	10"		X
4352	3'-6"	12"		X
4344	5'-0"	12"		X
4345	7'-0"	12"		X

* ICC-ES LISTING => PFC-5996
 * MULTI-HELIX ARE SPACED 3 DIAMETERS OF THE LOWER HELIX.



THIS DRAWING AND ITS CONTENTS ARE CONFIDENTIAL AND THE EXCLUSIVE PROPERTY OF RAM JACK SYSTEMS DISTRIBUTION, LLC. NO PUBLICATION, DISTRIBUTION OR COPIES MAY BE MADE WITHOUT THE EXPRESSED WRITTEN CONSENT OF RAM JACK SYSTEMS DISTRIBUTION, LLC. ALL RIGHTS RESERVED UNDER COPYRIGHT LAWS.

RAM JACK
 FOUNDATION SOLUTIONS

DWG. NO. : 2375.0001
 SCALE 3/4"=1'-0"
 DRAWN BY CWB
 CATALOG NO. : SEE TABLES
 DATE: 02/20/07
 REV. 1
 SHEET 1 OF 1