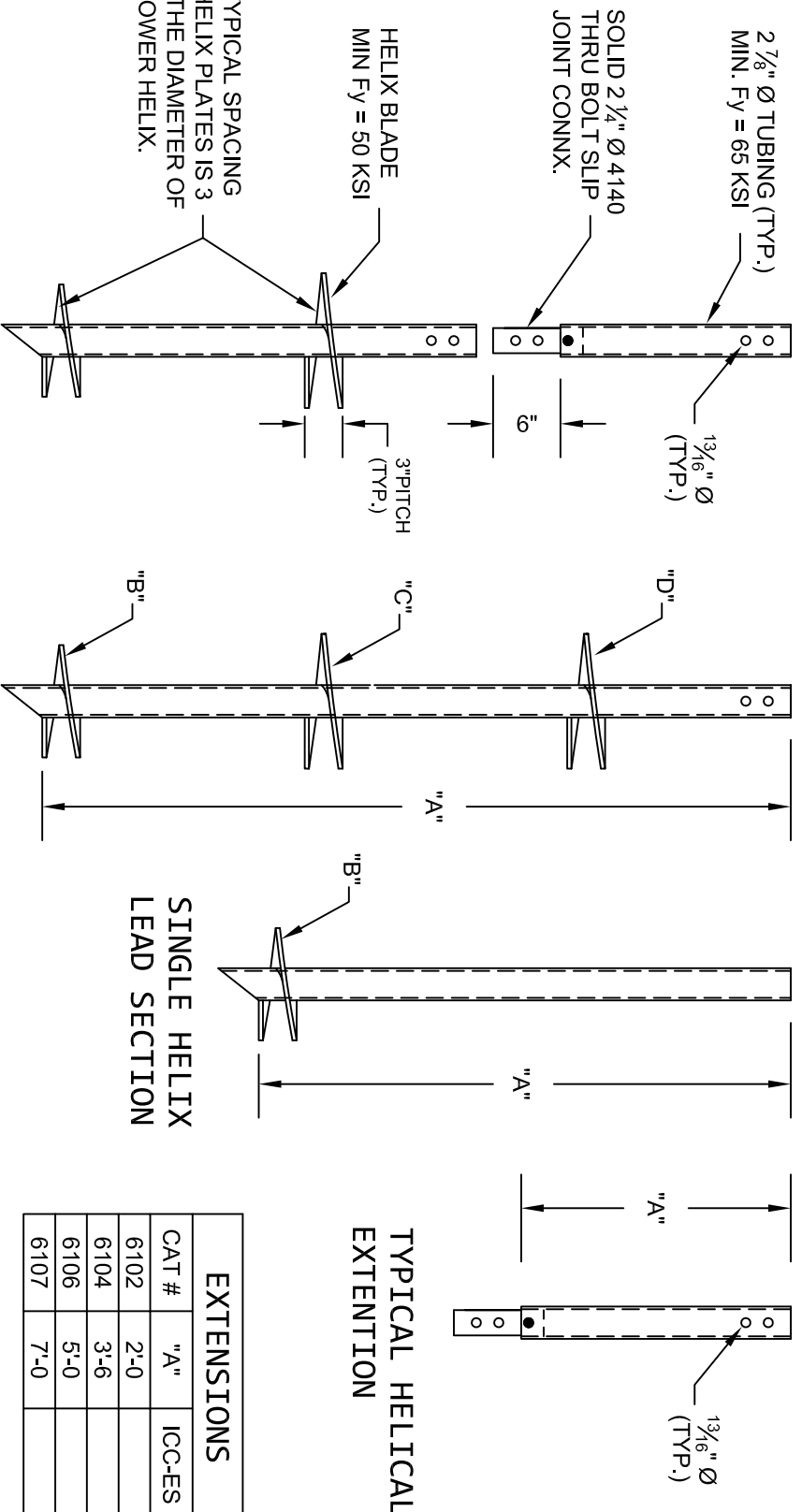


2 7/8" Ø HELICAL PILES AND ANCHORS

STRENGTH RATING

MAX. TORQUE STRENGTH - 7,000 FT-LB
 ULTIMATE CAPACITY (TENS/COMP) - 63.0 KIP*
 ALLOWABLE CAPACITY (TENS/COMP) - 31.5 KIP**

* BASED ON A TORQUE FACTOR (Kt) = 9
 ** W/ SAFETY FACTOR OF 2 BEING APPLIED
 CAPACITIES ASSUME PILES ARE FULLY BRACED WITH
 NO ECCENTRICITY



TYPICAL HELICAL EXTENTION

EXTENSIONS	
CAT #	"A"
6102	2'-0"
6104	3'-6"
6106	5'-0"
6107	7'-0"

LEAD SECTION TABLE

CAT #	"A"	"B"	"C"	"D"
6142	5'-0"	10"	12"	
6143	7'-0"	10"	12"	
6146	7'-0"	14"	16"	
6144	5'-0"	12"	14"	
6145	7'-0"	12"	14"	
6148	7'-0"	10"	12"	14"
6147	7'-0"	8"	10"	12"
6127	2'-0"	10"		
6128	3'-6"	10"		
6129	5'-0"	10"		
6130	7'-0"	10"		
6131	3'-6"	12"		
6132	5'-0"	12"		
6133	7'-0"	12"		

* ICC-ES LISTING => PFC-5996
 * MULTIPLE HELIX ARE SPACED 3 DIAMETERS OF THE LOWER HELIX.

1. POLYETHYLENE COPOLYMER THERMOPLASTIC COATING PER ICC-ES AC 228
2. LEAD AND EXTENTION SECTION AND PILOT POINT LENGTHS ARE NOMINAL. PILOT POINTS ARE 3".
3. SHAFT MATERIAL IS 2 7/8"Ø, 0.217 WALL, MINIMUM Fy=65 KSI.
4. HELIX BLADE MATERIAL IS HOT ROLLED, MINIMUM Fy=50 KSI CARBON STEEL. PLATE THICKNESS IS AVAILBLE IN 3/8" AND 1/2" THICKNESSES.
5. CONNECTORS ARE 2 1/4" Ø SOLID THRU BOLTED SLIP JOINTS.
6. NOMINAL SPACING BETWEEN HELICAL PLATES IS THREE TIMES THE DIAMETER OF THE LOWER HELIX.
7. MANUFACTURER TO HAVE IN EFFECT INDUSTRY RECOGNIZED WRITTEN QUALITY CONTROL FOR ALL MATERIALS AND MANUFACTURING PROCESSES.
8. ALL WELDING IS TO BE DONE BY WELDERS CERTIFIED UNDER SECTION 5 OF THE AWS CODE D1.1.
9. SEE ICC-ES EVALUATION REPORT PFC-5996 AND RAM JACK ENGINEERING HANDBOOK FOR ALLOWABLE VALUES AND/OR CONDITIONS OF USE CONCERNING MATERIAL PRESENTED IN THIS DOCUMENT.



THIS DRAWING AND ITS CONTENTS ARE CONFIDENTIAL AND THE EXCLUSIVE PROPERTY OF RAM JACK SYSTEMS DISTRIBUTION, LLC. NO PUBLICATION, DISTRIBUTION OR COPIES MAY BE MADE WITHOUT THE EXPRESSED WRITTEN CONSENT OF RAM JACK SYSTEMS DISTRIBUTION, LLC. ALL RIGHTS RESERVED UNDER COPYRIGHT LAWS.

RAM JACK

FOUNDATION SOLUTIONS

DWG. NO.: 2875.02 CATALOG NO.: SEE TABLES REV. 1
 SCALE 3/4"=1'-0" DRAWN BY: DLW DATE: 03/26/08 SHEET 1 OF 1