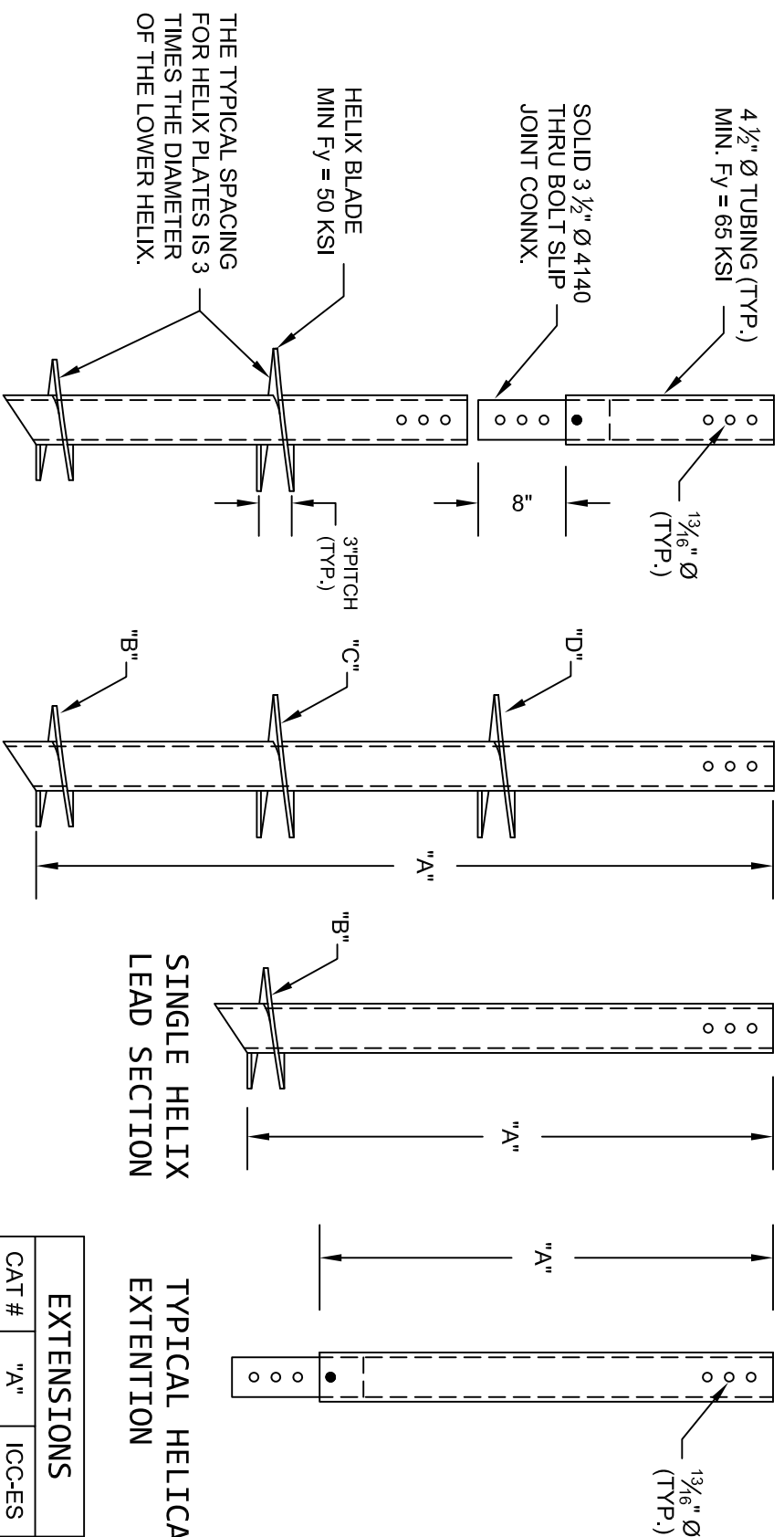


4 1/2" Ø HELICAL PILES AND ANCHORS



TYPICAL ANCHOR ASSEMBLY

MULTIPLE HELIX LEAD SECTION

SINGLE HELIX LEAD SECTION

TYPICAL HELICAL EXTENTION

EXTENSIONS	
CAT #	"A" ICC-ES
6306	5-0
6307	7-0

- POLYETHYLENE COPOLYMER THERMOPLASTIC COATING PER ICC-ES AC 228
- LEAD AND EXTENTION SECTION AND PILOT POINT LENGTHS ARE NOMINAL. PILOT POINTS ARE 3".
- SHAFT MATERIAL IS 4 1/2" Ø, 0.438" WALL THICKNESS, MINIMUM Fy=65 KSI.
- HELIX BLADE MATERIAL IS HOT ROLLED, MINIMUM Fy=50 KSI CARBON STEEL. PLATE THICKNESS IS AVAILBLE IN 3/8" AND 1/2" THICKNESSES.
- CONNECTORS ARE 3 1/2" Ø SOLID THRU BOLTED SLIP JOINTS.
- NOMINAL SPACING BETWEEN HELICAL PLATES IS THREE TIMES THE DIAMETER OF THE LOWER HELIX.
- MANUFACTURER TO HAVE IN EFFECT INDUSTRY RECOGNIZED WRITTEN QUALITY CONTROL FOR ALL MATERIALS AND MANUFACTURING PROCESSES.
- ALL WELDING IS TO BE DONE BY WELDERS CERTIFIED UNDER SECTION 5 OF THE AWS CODE D1.1.
- SEE ICC-ES EVALUATION REPORT PFC-5996 AND RAM JACK ENGINEERING HANDBOOK FOR ALLOWABLE VALUES AND/OR CONDITIONS OF USE CONCERNING MATERIAL PRESENTED IN THIS DOCUMENT.

STRENGTH RATING

MAX. TORQUE STRENGTH - 22,000 FT-LB
 ULTIMATE CAPACITY (TENS/COMP) - 154.0 KIP*
 ALLOWABLE CAPACITY (TENS/COMP) - 77.0 KIP**

* BASED ON A TORQUE FACTOR (Kt) = 7
 ** WITH SAFETY FACTOR OF 2 BEING APPLIED.
 CAPACITIES ASSUME PILES ARE FULLY BRACED WITH NO ECCENTRICITY

LEAD SECTION TABLE			
PART NUMBER	HELIX BLADE SIZE (B - C - D)	HELIX BLADE THICKNESS	LEAD LENGTH (A)
6333	12"	3/8"	7-0
6336	14"	1/2"	7-0
6338	16"	1/2"	7-0
6343	10"-12"	3/8"-1/2"	7-0
6345	12"-14"	3/8"-1/2"	7-0
6348	10"-12"-14"	3/8"-3/8"-1/2"	7-0
6351	12"-14"-16"	3/8"-1/2"-1/2"	7-0
6346	14"-16"	1/2"-1/2"	7-0

* ICC-ES LISTING => PFC-5996
 * MULTI-HELIX ARE SPACED 3 DIAMETERS OF THE LOWER HELIX.



THIS DRAWING AND ITS CONTENTS ARE CONFIDENTIAL AND THE EXCLUSIVE PROPERTY OF RAM JACK SYSTEMS DISTRIBUTION, LLC. NO PUBLICATION, DISTRIBUTION OR COPIES MAY BE MADE WITHOUT THE EXPRESSED WRITTEN CONSENT OF RAM JACK SYSTEMS DISTRIBUTION, LLC. ALL RIGHTS RESERVED UNDER COPYRIGHT LAWS.

RAM JACK
 FOUNDATION SOLUTIONS

DWG. NO. : 45.02	CATALOG NO. : SEE TABLES	REV. 1
SCALE 3/4" = 1'-0"	DRAWN BY DLW	DATE: 04/30/08
SHEET 1 OF 1		